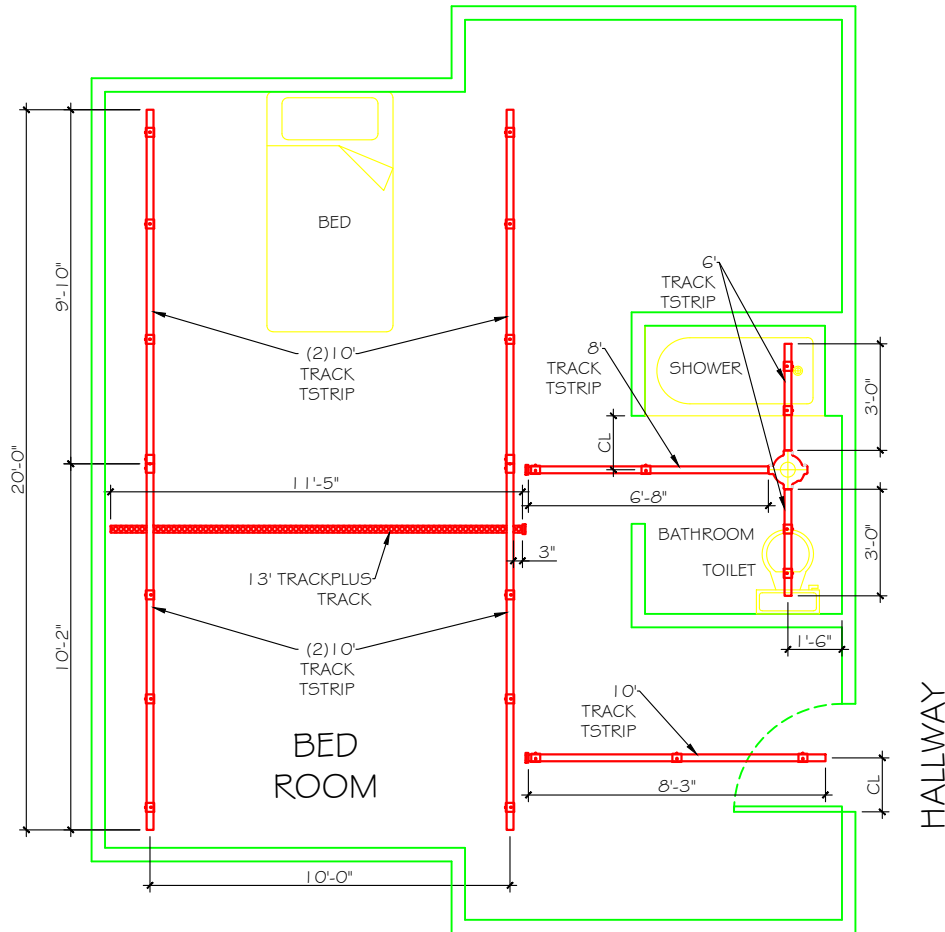


BILL OF MATERIALS		
Part Number	Description	QTY
329181	C800 lbs. Manual Traverse (Omni)	1
360770	1000 lbs. 2 point carry bar - 520 mm	1
363930G	Assembly, XY Gantry System Trolley, Transition Gate	1
363981	Transition Gate Bracket Mount for Track Plus	2
360544	TrackPlus T Strip - (3.97 m, 13'-0")	1
360439	Regular Track T Strip - (3.10 m, 10'-2")	5
360447	Regular Track T Strip - (2.50 m, 8'-2")	1
360448	Regular Track T Strip - (1.93 m, 6'-4")	1
363959	transstrip (length - 18')	3
360454	Quick-fit 90° turntable	1
360478	3" Ceiling bracket Assy - 1/2" slot	21
360457	6" Connector Bracket Assembly 1/2" slot	2
360419	White Molded Styrene End Cap	7
360451	Track Plus End Cap	1
360460	Track End-stop (w/pin & ring)	6



**LEGEND**

- 3" BRACKET**
- 6" BRACKET**
- WALL MOUNT BRACKET**
- STANDARD TRACK**
- SUPER TRACK**
- TRACKPLUS**
- DOCKING STATION**
- QUICKFIT 90° TURNTABLE**
- MULTIPORT TURNTABLE**
- TRANSITION GATE**

NOTE: The brackets in the above legend indicate the recommended locations for lateral bracing points for a suspended track system.

TRACK LENGTH APPROXIMATE. (DO NOT CUT TRACK BEFORE INSTALLING) VERIFY ALL DIMENSIONS PRIOR TO INSTALLATION.

INFORMATION ON THIS DOCUMENT IS PROPRIETARY TO PRISM MEDICAL AND SHALL NOT BE COPIED, REPRODUCED, USED OR DISCLOSED IN WHOLE OR IN PART WITHOUT WRITTEN CONSENT OF PRISM MEDICAL.

Sales Representative:  
**B BOROWSKI**

PM Approval:  
**B MORGAN**

Designer:  
**BJ TERRY**

Department Approval:  
**J DYER**

Project Name  
**MAINEHEALTH - WALDO COUNTY**

Sheet Description  
**BARIATRIC ROOM**

Project #: 4296244255  
Date: 8/15/17  
Scale: 3/16" = 1'-0"  
Sheet #: 1 of 1